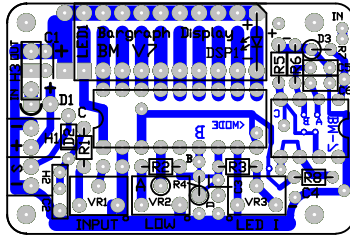
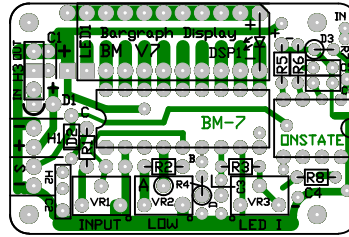


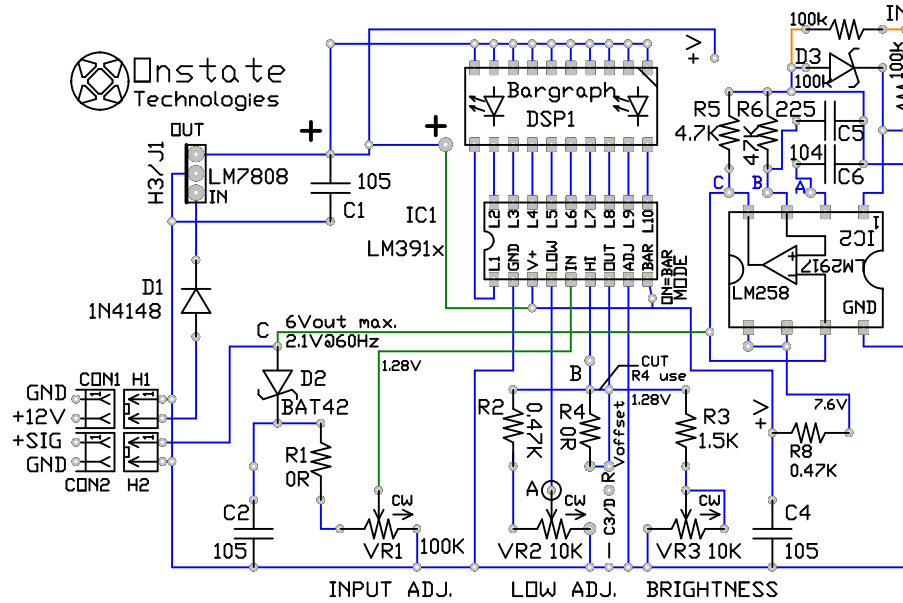
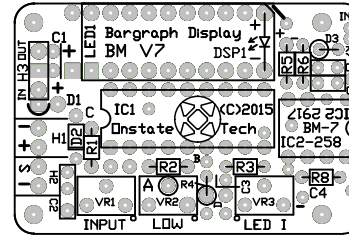
Bottom Layer Trace



Top Layer Trace



Legend Labels



INPUT ADJ. LOW ADJ. BRIGHTNESS
 R1: fine adjustment divider when used.
 D2 optional for DC input. D2/C2 display response delay

DC pulse in
 Bargraph Display Meter
 Part: BM-V7 (C)2015

FREQUENCY DISPLAY METER

All *-ND are Digi-Key part codes (Digi-key.com)
 All resistors: 1/8W, 5%

(value)EBK-ND, eg. 47KEBK-ND (47K)

Trimmer resistors (VR), Cermet, PC pins

3362P-<VALUE>LF-ND, top adj. 103=10k, 104=100k

3362S-1-<VALUE>LF, side adj. 203=20k

D1: 1N4148, general Si diode, 0.2A

J1/H3: Jumper, LM7808, 8V reg. 1A

D2/D3: 497-2495-2-ND, BAT42 schottky, 30V, 200mA

Caps C: mono cer. 104=0.1uF, 103=0.01uF, 105=1.0uF

C2: power filter, any type >1.0uF on +/-

IC1: LM3918N-1-ND, 10 seg. bargraph driver

IC2: LM2917-N Frequency to Voltage Converter

IC2: LM258 dual op-amp. 0-0.5V AMP, GAIN

DISP1: 160-1067-ND, 10 seg. LED bargraph, GRN

Display Dot/Bar mode:

1. Cut trace on bottom side

near MODE label to pin9