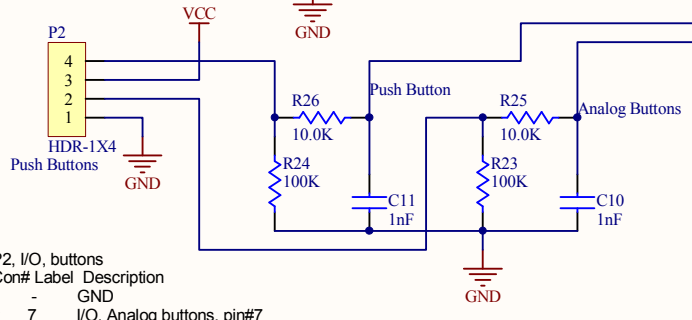
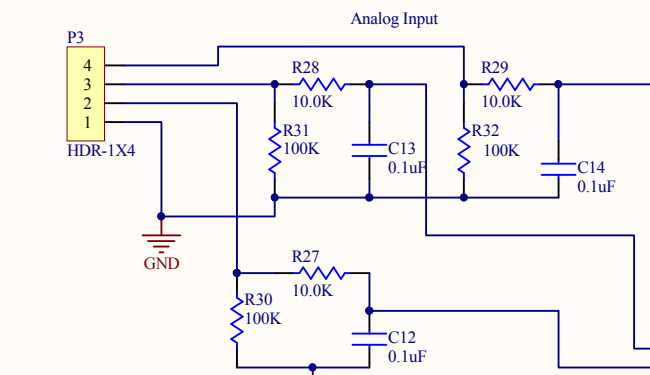


P3, Analog In

Con#	Label	Description
1	-	GND
2	4	AN0, pin#2
3	3	AN1, pin#3
4	2	AN2, pin#4

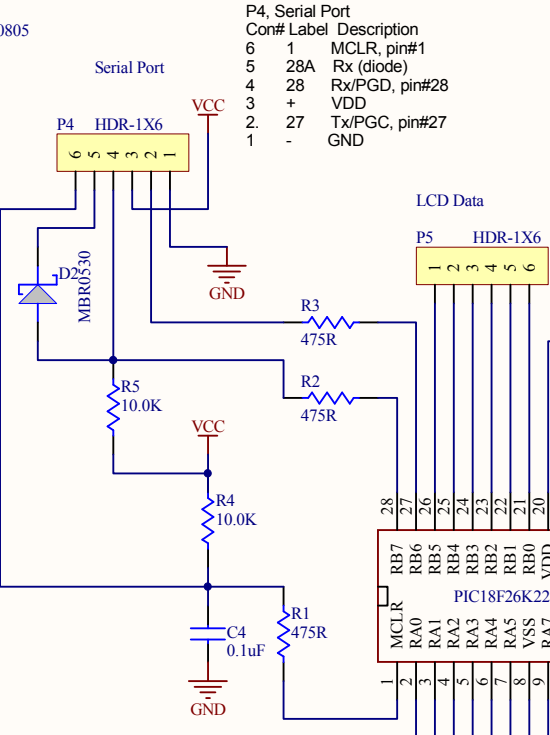


P2, I/O, buttons

Con#	Label	Description
1	-	GND
2	7	I/O, Analog buttons, pin#7
3	+	VCC
4	6	I/O, Switch, pin#6

P9, I/O, Rotary Encoder

Con#	Label	Description
1	-	GND
2	11	I/O, Switch, pin#11
3	10	I/O, CH A, pin#10
4	9	I/O, CH B, pin#9

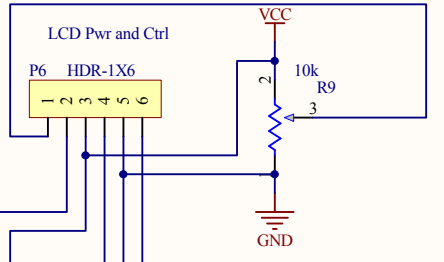


P4, Serial Port

Con#	Label	Description
6	1	MCLR, pin#1
5	28A	Rx/PGD, pin#28
4	28	Rx/PGD, pin#28
3	+	VDD
2	27	Tx/PGC, pin#27
1	-	GND

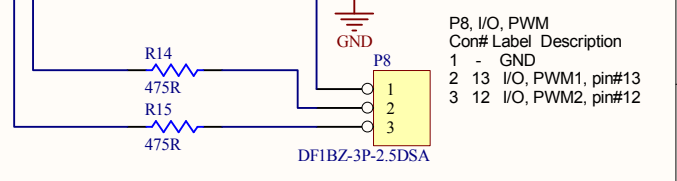
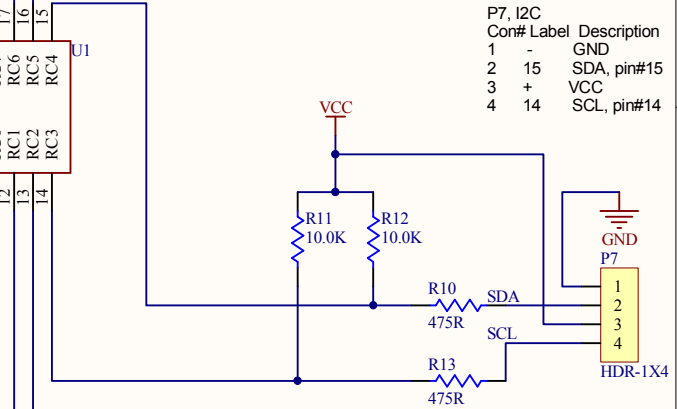
P5, Data Port

Con#	Label	Description
1	26	LCD_D7
2	25	LCD_D6
3	24	LCD_D5
4	23	LCD_D4
5	22	LCD_E
6	21	LCD_RS



P6, Power and Control

Con#	Label	Description
6	16	I/O
5	-	GND
4	17	Neg ctrl
3	+	VCC
2	18	Pos ctrl
1	V1	V1 adj.



PIC28 Rev. 1
 PIC Microcontroller 28-pin Controller Board
 August 22, 2018
 DH

Title		
Size	Number	Revision
Letter		
Date:	18/12/2020	Sheet of
File:	C:\onstate\...\PIC18F 28pin.SchDoc	Drawn By: