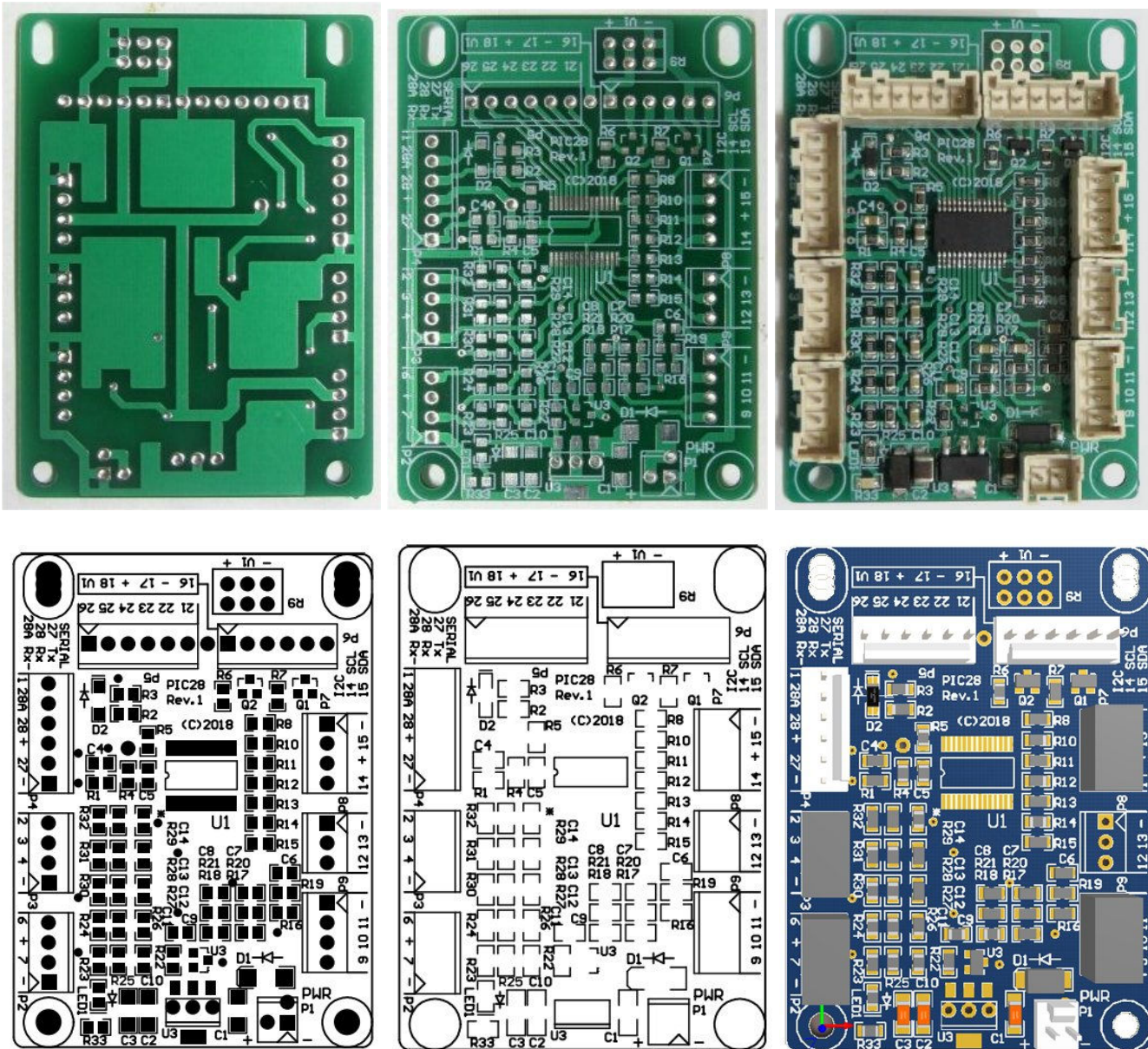


PIC18F Microcontroller Interface Development Board
PCB, PIC18F controller, 3 A/D, switch, input interface board, LCD out.
PIC18F26K22-I/SS. 18K 8-Bit 64MHz 64KB (32K x 16) FLASH 28-SSOP.



Technical Specifications:

Operating voltage:

12V nominal (7-24V). 5.0V Regulator (78M05).

Dimension:

2.475"x1.80" (62.4x45.7mm).

2x 1/8" holes at 1.5". 2x 1/8"x1/4" slot at 1.5"

PCB:

1/16" FR4, ROHS, HASL, double-sided, plated holes.

Input signal range (nominal):

5V positive

Reference regulator voltage:

3.3V regulator

IN/OUT connectors:

9x 0.1" spacing.

SMD parts:

0805, SOT-23

CONNECTOR WIRING

P1 Vin PWR

Con#	Label	Description
1	-	GND
2	+	Vin power

P2, I/O, buttons

Con#	Label	Description
1	-	GND
2	7	I/O, Analog buttons, pin#7
3	+	VCC
4	6	I/O, Switch, pin#6

P3, Analog In

Con#	Label	Description
1	-	GND
2	4	AN0, pin#2
3	3	AN1, pin#3
4	2	AN2, pin#4

P4, Serial Port

Con#	Label	Description
6	1	MCLR, pin#1
5	28A	Rx (diode)
4	28	Rx/PGD, pin#28
3	+	VDD
2	27	Tx/PGC, pin#27
1	-	GND

P5, Data Port

Con#	Label	Description
1	26	LCD D7
2	25	LCD D6
3	24	LCD D5
4	23	LCD D4
5	22	LCD E
6	21	LCD RS

P6, Power and Control

Con#	Label	Description
6	16	I/O
5	-	GND
4	17	Neg ctrl
3	+	VCC
2	18	Pos ctrl
1	V1	V1 adj

P7, I2C

Con#	Label	Description
1	-	GND
2	15	SDA, pin#15
3	+	VCC
4	14	SCL, pin#14

P8, I/O, PWM

Con#	Label	Description
1	-	GND
2	13	I/O, PWM1, pin#13
3	12	I/O, PWM2, pin#12

9, I/O, Rotary Encoder

Con#	Label	Description
1	-	GND
2	11	I/O, Switch, pin#11
3	10	I/O, CH A, pin#10
4	9	I/O, CH B, pin#