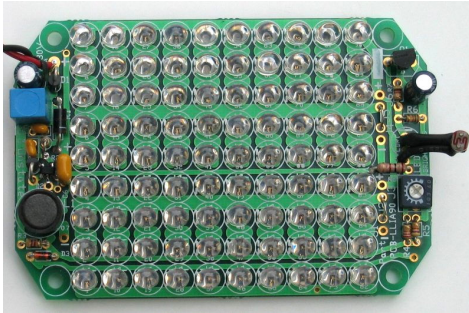


LLIA90 LED Illuminator Array



The LLIA90 is a high-quality and high-performance multi-purpose LED illuminator array. It has a built-in regulator and a photocell control circuit for automatic LED array on/off

during the day and night. The LED array has 90 LEDs in 3 banks of 3-series and 10-parallel pattern. It can also be externally triggered on/off for multi-coloured illumination using red, green and blue arrays. The LEDs are current regulated to maintain best performance and to prevent thermal runaway from excess heat and voltage. The LLIA90 PCB is designed for high-performance LED illumination applications using thick copper pads on a double-sided and through-hole plated design for high reliability and optimum LED heatsinking and performance. The solder pads are gold immersion coated for high soldering reliability and for RoHS compliance. The multi-purpose design features adjustable current control, high-efficiency switch-mode regulation, external trigger and auto photocell-triggered LED illumination for décor lighting or area lighting. The LED controller is also configurable to power other star-type, high-power star LEDs such as the Luxeon or K2 type.

Features:

- 90 LED illumination array for 5mm LEDs
- 3 banks at 3-series by 10-parallel pattern or 3x30 pattern
- Compact, small design.
- Adjustable current regulator
- Efficient, integrated switch-mode design
- 7-30VDC input, 1A output operation
- External or automatic photocell on/off control
- High performance design for LED applications
- Large copper pads for heat dissipation

Benefits:

- Maximise and maintains peak LED performance
- Extends LED life
- Efficient and low cost illumination

Applications:

- Portable lighting, architectural lighting
- Décor lighting, area lighting
- Replace light bulb lighting
- Configurable for external LED/electronic uses

Available Model

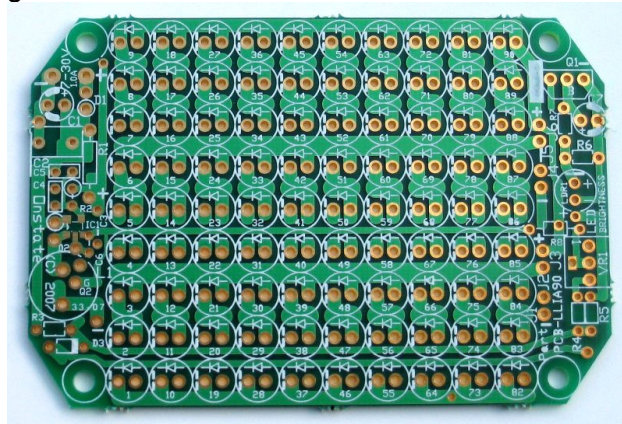
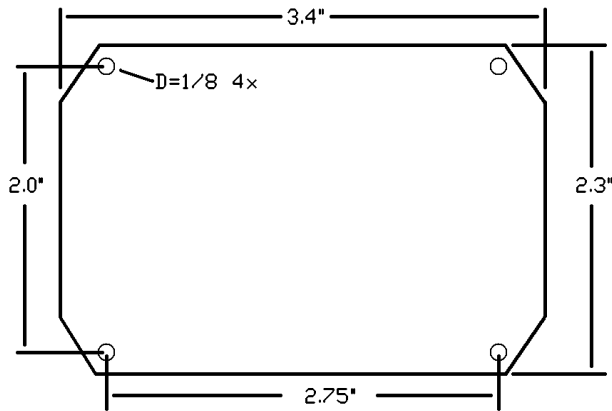
- PCB-LLIA90: Illuminator array PCB, no parts.
- OT-LLIA90-12V0-01: Illuminator array PCB with parts kit, no LED.



The LLIA90 LED illuminator mounted inside a cabinet for décor lighting. The power supply can be connected to a power switch for manual on/off operation.

Dimensions:

All holes are 1/8" diameter at 2.0" x 2.75" spacing.



Do not exceed the specifications of the unit.

Technical Specifications:

Printed circuit board:

Thickness:	1/16"
Material:	FR4 glass fibre
Plating:	2 oz copper
Layers:	Double-sided
Finish:	Gold immersion
Soldermask:	Green both sides
Silkscreen:	White on component side
Routing:	Tabbed. 8pcs/pallet
Dimension:	3.4" x 2.3" rectangular
Soldering:	Through-hole plated
Compliance:	ROHS, lead-free

LLIA90 LED array:

Temperature:	-30°C to 50°C
Input voltage:	7-30VDC
LED:	5mm type, 90 total. 3 banks (3s10p)
Maximum current:	1A through LED driver
Maximum power:	10W total