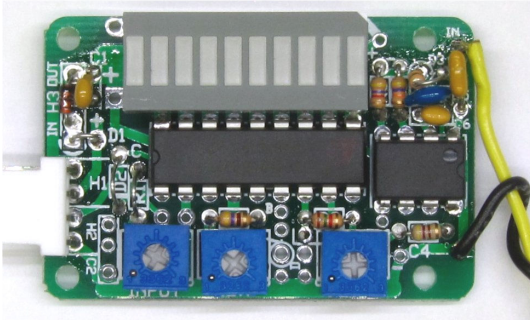


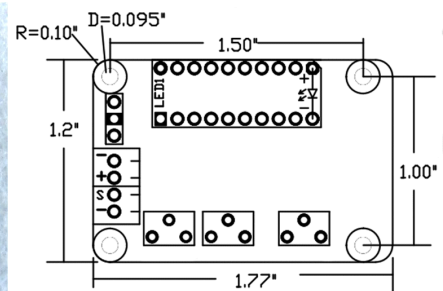
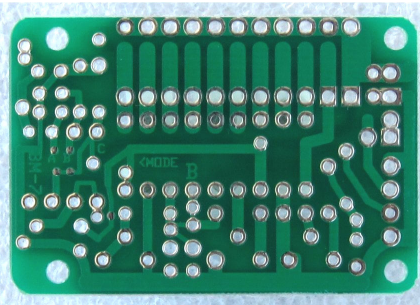
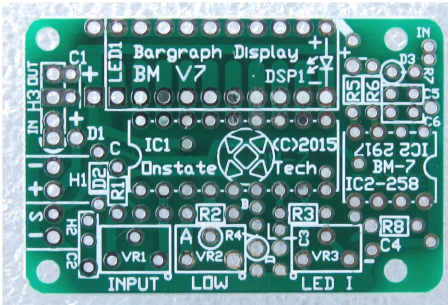
Multi-Purpose Bargraph Display Meter



The BM Bargraph Meter is a 10-LED display meter for quick visual indication of voltage inputs or signal levels. Its small size, integrated, multi-function design makes it very useful as multi-purpose indicators. It is compatible with the LM391x series of bargraph display drivers for linear or music VU meter applications. An optional frequency to voltage function using the LM2917N allows for tachometer applications. The adjustable scale range can be used for expanded scale meters or signal displays.

Features:	Benefits:
- BAR or DOT mode selection	- Small size for tight installations
- Adjustable brightness control	- Easy-to-use and setup
- Use with LM3914/5/6 and LM2917N	- Quick visual indication of signal
- Constant current LED display	- Simple, integrated module
- Adjustable display scale range	
- Easy-to-use integrated design	Applications:
- Small and economical	- Voltmeter, frequency meter
- Cascadeable for extended display	- Signal, audio music VU level meter
- F-V circuit for various signals	- Expanded scale meter
- Rugged FR4, ROHS, HASL, plated hole PCB	- Tachometer RPM/freq. display

See BM Bargraph Meter schematic and LM3914, LM3915, LM3916 and LM2917N data sheets for more technical information. See appropriate schematic for application requirements.



Control Adjustments

INPUT: Adjusts 10th LED scale. IC1 pin 5 (IN). Set same as HI (pin6) for full scale. CW is lower Vin.

LOW: Adjusts 1st LED. IC1 pin 4 (LOW). $V_{IN} > V_{LOW}$. Full CW adj. is ground.

LED I: LED brightness.

