



LED Lighting Solutions



Seeing with LED Lighting™

2011

Linear LED Lights

Flexible LED light strips:

Power: 12 VDC (+/- 10%), 7W/m, 14W/m.
LEDs: High-power white LEDs, SMD 5050 (3 chips/LED, Epistar)
30 LEDs/section, 0.6A/section
Lumens: 400lm (warm white, neutral white), 450lm (cool white)
Dimension: 50cm (L) section, 250cm roll, 150 LEDs, 14W/m
100cm (L) section, 500cm roll, 150 LEDs, 7W/m
Material: Flexible PCB-PCB, silicone tube, silicone gel cover
Wiring: 12" red/black power input
Solder end-to-end for inline connections
Mounting: Metal flat bar or U-channel extrusion
Note: An external current regulated power supply is required.



Linear LED light bars:

Power: 12 VDC VDC (+/- 10%), 7.2W Max
LEDs: 30 high-power white LEDs, SMD 5050 (3 chips/LED, Epistar)
Lumens: 420lm (warm white, neutral white), 540lm (cool white)
Dimension: 51.6cm (L) x 2.0cm (W) x 1.5cm (D)
20.3" (L) x 0.78" (W) x 0.6" (D)
Material: Aluminum extrusion, anodized silver
Window: 1.6mm clear plastic cover, acrylic
Wiring: 12" red/black power in w/connector
3" red/black for inline end-to-end connections.
Mounting: Spring steel mounting clips
Note: An external current regulated power supply is required.



Outdoor LED Lighting

SunLite SL100 Series:

All-weather, white light LED lighting solution.
Replaces 200-250W outdoor commercial/industrial lights.
Power: 90-264Vac, 47-63Hz, PFC, Class 2, 110W max
LEDs: 90W, 36 high-power white LEDs
Lumens: Natural white-5200lm (system, on scene)
Dimension: 16.3" (L) x 10.5" (W) x 3.6" (D)
Material: All-weather, aluminum heatsink
Finish: Black, painted
Mounting: Standard- wall mount bracket
Certification: ETL Listed



OnLite AL-Series:

All-weather, white light LED lighting solution.
Replacement: 100W-150W outdoor lights.
Power: AL6 and AL9. 9W max. 12/24V ac/dc, 0.75A
Compatible with landscape and low voltage power supplies
Dimension: 5.6" (L) x 4.0" (W) x 4.0" (D)
Material: Die-cast aluminum, all-weather housing
Finish: Painted, dark brown
Hardware: 1/2NPT mount. SS machine bolts
LED: AL9: 90 cool white LEDs. AL6: 1W power LED
Beam Angles: AL9:25 deg/30 deg, AL6:45 deg/120 deg.





LED Illuminators

AR45 Series:

Power: 45W max.
 LEDs: 14 high-power 3/5W LEDs
 Dimension: 11.9" (L) x 2.4" (W) x 3.5" (D)
 Material: Extruded aluminum, CNC plastic shell
 Weight: 1.8kg (4.0lb)
 Beam Angles: Various beams. Flood to spot
 Note: An external current regulated power supply is required.



AR25 Series:

Power: 25W Max
 LEDs: 14 high-power 1/3W LEDs
 Dimension: 10.0" (L) x 1.7" (W) x 2.4" (D)
 Material: Extruded aluminum heatsink
 CNC ABS plastic shell
 Window: 1/16" clear Lexan, CNC machined
 Weight: 0.8kg (1.75lb)
 Note: An external current regulated power supply is required.



ON12 Series:

Power: 12W Max
 LEDs: 4x 1W LEDs. 5mm 850nm LED
 Dimension: 2.3"(W) x 3.3"(H) x 1.7"(D)
 Material: 3/4" CNC plastic body, black
 Aluminum LED heatsink, anodised black finish.
 Window: 1/8" clear PC, CNC machined



ON45 Series:

Power: 45W Max.
 LEDs: 1/3W power LEDs. 5mm 850nm LEDs
 Dimension: 7.1" (L) x 4.8" (W) x 2.5" (D)
 Material: Extruded aluminum heatsink
 Window: 1/8" clear PC cover
 Note: An external current regulated power supply is required.

ON50 Series:

Power: 50W Max.
 LEDs: 1/3W power LEDs. 5mm 850nm LEDs
 Dimension: 10.0" (L) x 6.3" (W) x 2.0" (D)
 Material: Extruded aluminum heatsink
 Window: 1/8" clear PC cover
 Note: An external current regulated power supply is required.

ON100 Series:

Power: 100W Max.
 LEDs: 1/3W power LEDs. 5mm 850nm LEDs
 Dimension: 10.1" (L) x 6.3" (W) x 3.5" (D)
 Material: Extruded aluminum heatsink
 Window: 1/8" clear PC cover
 Note: An external current regulated power supply is required.

Printed Circuit Boards

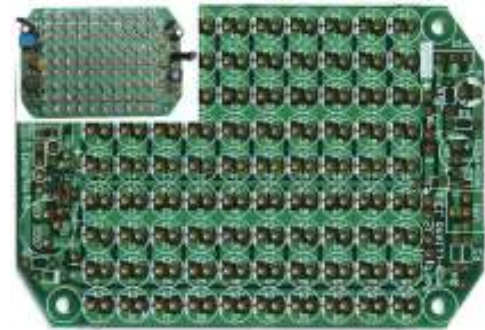
SSIA30 LED Array PCB:

Material: 1/16", FR4 glass-fibre
 Plating: 2 oz copper, gold flash finish
 Layers: Double-sided with plated through holes
 Dimension: 1.75" sqr with 1/8" holes at 1.5" sqr
 Compliance: RoHS, lead-free
 LED: 5mm type. 30 total
 6 series (3x2) by 5 parallel
 Built-in LED driver and photocell circuit
 Maximum power: 4W total



LLIA90 LED Array PCB:

Material: 1/16", FR4 glass fibre
 Plating: 2 oz copper, gold flash finish
 Layers: Double-sided, plated holes
 Silkscreen: White on component side
 Dimension: 3.4" x 2.3" rectangular
 Compliance: RoHS, lead-free
 LED: 5mm type, 90 total. 3 banks (3s10p)
 Built-in LED driver and photocell circuit. Adjustable current
 Maximum power: 10W total



PBS18 LED Array PCB:

Material: 1/16", FR4 glass fibre
 Plating: 2 oz copper, silver-plating
 Layers: Double-sided, plated holes
 Silkscreen: Green soldermask both sides
 Dimension: 0.36"x8.21"
 Compliance: RoHS, lead-free
 LED's: 3/5mm, SMD, 18 total
 3 sections (6 LEDs per section)
 Maximum power: 2W total



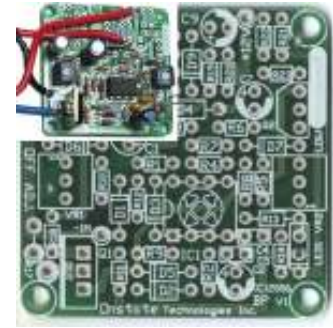
PEBM-3 LED Bargraph Meter PCB:

Material: 1/16", FR4 glass fibre
 Plating: 2 oz copper, gold flash finish
 Layers: Double-sided, plated holes
 Silkscreen: Green soldermask both sides
 Dimension: 1.18"x1.77"
 Compliance: RoHS, lead-free
 LED's: 10 LED bargraph display
 For use with LM3914/5/6 display drivers
 Adjustable settings. Built-in op-amp circuit. Multiple applications
 Maximum power: 2.5W total. LM78xx regulator optional

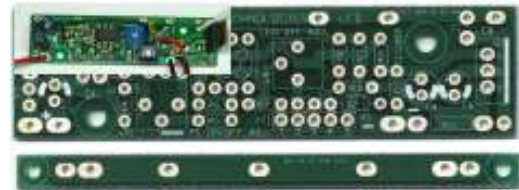


PEBP Battery Protector PCB:

Material: 1/16", FR4 glass fibre
 Plating: Double-sided, plated holes
 Silkscreen: Green soldermask both sides
 Dimension: 1.71" square
 Operating voltage: Up to 30V
 Design: Dual op-amp auto cut-off circuit
 Adjusting on/off settings. N-CH MOSFET out
 Flashing LED display. Multiple applications
 Maximum power: 8A N-CH switch


PEPCR Linear LED Driver PCB:

Material: 1/16", FR4 glass fibre
 Plating: 2 oz copper, silver-plating
 Layers: Double-sided, plated holes.
 Silkscreen: Green soldermask both sides
 Dimension: PCB- 3.8"x0.82"
 Bus bar-3.8"x0.22"
 Compliance: RoHS, lead-free
 Operating voltage: Up to 30V
 Design: Dual op-amp linear LED driver with
 photocell circuit. N-CH current regulation
 Adjustable settings. PWM. Multiple applications
 Maximum power: 8A N-CH switch


SR-D3 Switching Regulator PCB:

Material: 1/16", FR4 glass fibre
 Layers: 2 oz copper, double-sided, plated holes.
 Silkscreen: Black soldermask both sides
 Dimension: 2.25"x2.1"
 Design: LM2596T switching regulator with op-amp
 Constant current up to 3A
 Constant voltage up to 30V
 Adjustable settings. Built-in op-amp circuit
 Multiple applications
 Maximum power: 2.5W total. LM78xx regulator


MFSRC Multi-function LED Driver PCB:

Material: 1/16", FR4 glass fibre
 Plating: 2 oz copper, double-sided, plated holes.
 Silkscreen: Green soldermask both sides
 Dimension: 2.3"x2.2"
 Input: Up to 50VDC or 30VAC
 Design: Supertex HV9910B/16B LED driver IC
 Built-in op-amp photocell/control circuit
 Multiple applications. Adjustable settings
 Solar, LED, charger, CCTV applications
 Maximum power: up to 8A. Depending on inductor and capacitor.



LED Lighting Control Accessories

PMSC36 PIR occupancy motion sensor:

Power: 120VAC (4W), 240VAC (7W)
 24VDC (14-17VAC, 1W)
Load Control: Relay (NO), works with inductive loads
 800W@120V, 1200W@240V, 10A@24V
Daylight ON mode: Adjustable, <3Lux to daylight
ON-Time: Adjustable, Min: 8 seconds. Max: 8 minutes
Sensitivity: Adjustable, min-max
Detection: up to 40ft radius (12m), 360 degrees, 3 sensors
Status Indicator: Green LED, flashing activity
Dimension: 4.65" (D) x 2.25" (H)
Standards: CE, RoHS, UR, TUV-EMC, LVD



PMSW27 PIR occupancy motion sensor:

Power: 120VAC, 6W Max.
 24VDC (20-28V), 1W Max.
Load Control: Relay (NO), works with inductive loads
 1200W @ 120VAC, 15A @ 24VDC.
Daylight ON mode: Adjustable, <15Lux to daylight
ON-Time: Adjustable, Min: 10 seconds. Max: 9 minutes
Sensitivity: Adjustable, min-max
Detection: up to 40ft radius, 270 degrees, 2 sensors
Status Indicator: Green/Orange LED, flashing activity
Dimension: 4.65" (D) x 2.25" (H)



CIR LED Driver:

Power: up to 50VDC/28VAC input
Current: Constant current regulation.
 1A. Up to 4A versions
Design: High efficiency switch-mode design
 Adjustable current, photocell control option
 Multiple applications. Multiple uses for
 CCTV or LED regulation.



Universal LED Driver Power Supplies:

Power: 100-240VAC, 50-60Hz
Current: Constant current regulation.
 Constant voltage limit
Standard: Class 2 self-limiting, CSA/UL
Design: High efficiency switch-mode
 Multiple applications. Multiple uses
 for CCTV or LED regulation





**Designed and
Made In Canada**

**Save up to 80%
on lighting costs**

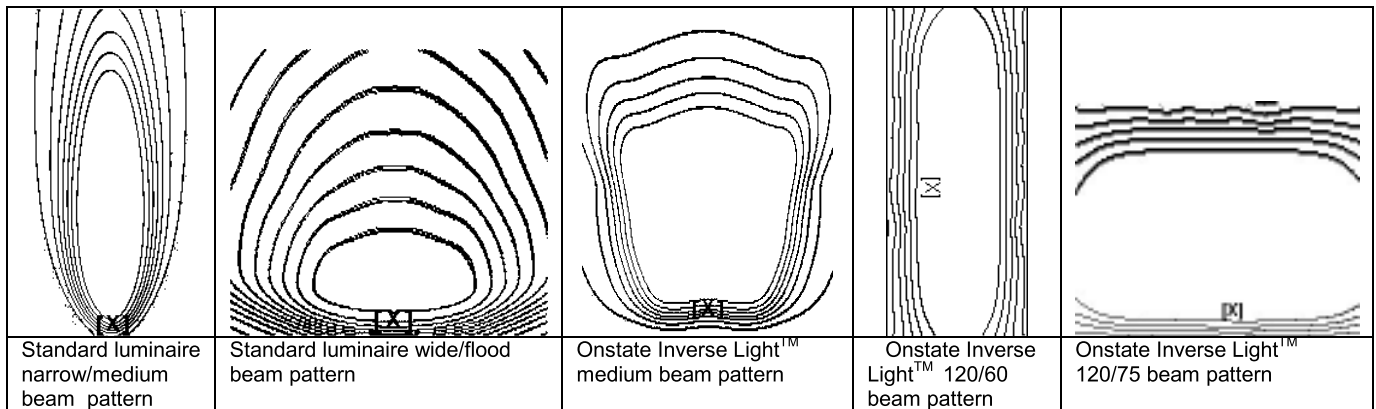


Features of Onstate LED lighting:

- Inverse Light™ optical system
- Advanced, high brightness LED technology
- Environmentally friendly and safe operation
- Even light distribution
- Low power consumption
- Runs cool, safe to touch
- Consistent light quality and beam pattern
- All-weather indoor or outdoor use
- Low cost of ownership
- No harmful rays to affect animals and objects
- No heavy metals or toxic substances
- Long life, low degradation
- Robust, rugged design and construction
- Easy to install and use
- Integrated lighting solution
- Easy replacement and upgrades.
- Industry standard electrical fixtures
- Designed and made in Canada

Applications:

- For good colour definition and contrast lighting requirements.
- Architectural, industrial, residential, commercial outdoor lighting.
- Walkways, roads, signs, security lighting, solar and power limited lighting.
- Freezers and cold weather lighting.
- High reliability, low maintenance lighting.



* Onstate's proprietary Inverse Light™ optical system uses specifically designed lens/collimators and LEDs to provide a beam pattern with more light on far objects and less light on near objects for an evenly light scene. The optical system reduces the effect of light reduction with distance known as the inverse square law.